

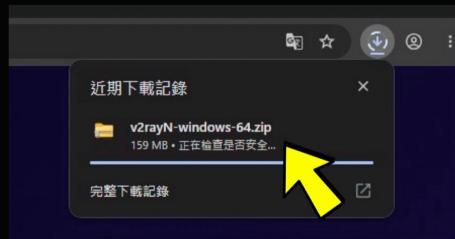
Windows Installation and Setup Guide

This guide is for Windows devices.
Follow the steps below to download, extract, run, and import the configuration.

Step 1: Download the Windows client



Open <https://haipaida.com> and scroll down to Line Delivery Center. Locate the Windows section and click “Official Download” .



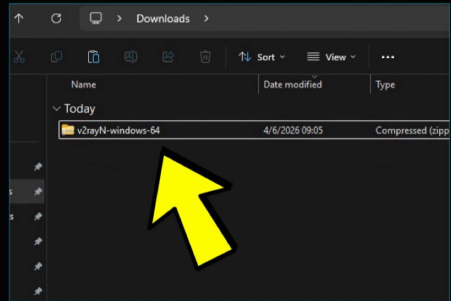
After the download finishes, click the Downloads icon in the top-right corner of your browser to view the downloaded file.

Step 2: Open the Downloads folder

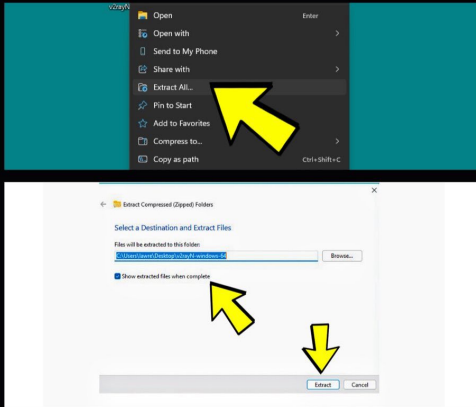
After the download is complete, open your Downloads folder (or the folder where you saved the file). You should see the downloaded ZIP file:



v2rayN-windows-64.zip



Step 3: Extract the zip file



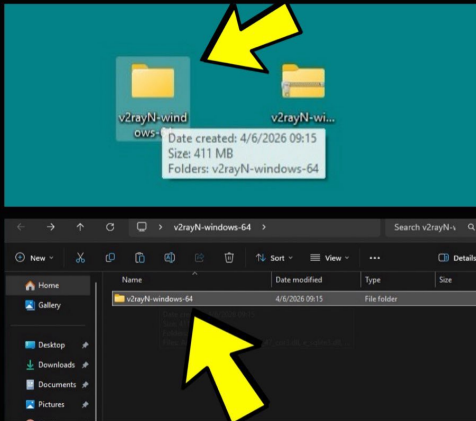
Right-click:
v2rayN-windows-64.zip
Then select:
Extract All...

Windows will open the extraction window.

Take note of the extraction location. (Saving it to your Desktop is recommended.)

Then click: **Extract**

Step 4: Open the extracted folder

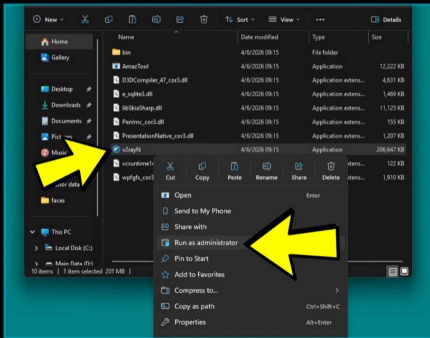


After extraction, a new folder will appear:
v2rayN-windows-64
Open this folder.

If there is another folder with the same name
inside, open it again:
v2rayN-windows-64

Continue until you see the program files.

Step 5: Run v2rayN as administrator



Inside the folder, find:
v2rayN



Its type should show as:
Application



Right-click v2rayN, then select:
Run as administrator
(Required)

Step 6: Handle the Windows security warning

Windows may show this message:

Windows protected your PC

This is a common Microsoft Defender SmartScreen warning for apps from an unknown publisher.



Click:
More info

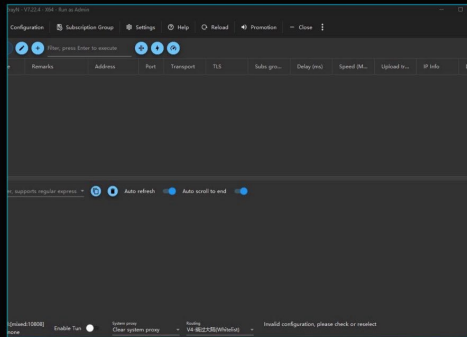


Then click:
Run anyway

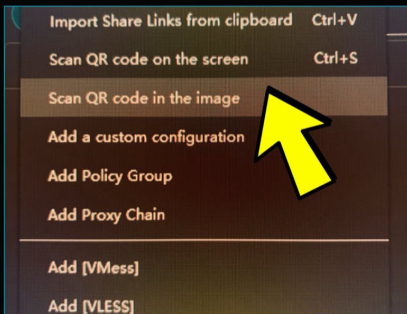
Step 7: Open the v2rayN main window

After the app opens, you will see the v2rayN main interface.

The server list may be empty at first.
This is normal.



Step 8: Import the QR code configuration

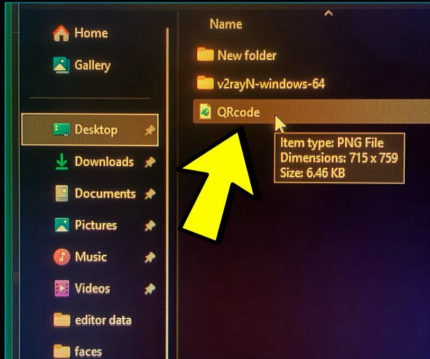


At the top of v2rayN, click:
Configuration



Then select:
Scan QR code in the image

Step 9: Select the QR code image



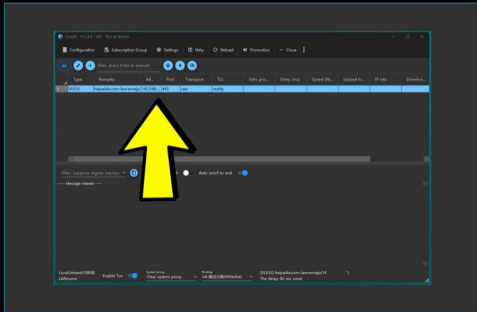
A file selection window will open.

Locate and select your QR code image.
For example:

`QRcode.png`

Then click Open.

Step 10: Confirm the configuration was imported



After importing successfully, a new configuration entry will appear in v2rayN

You should see information similar to:

Type: **VLESS**

Remarks: **haipaida.com-xxxx**

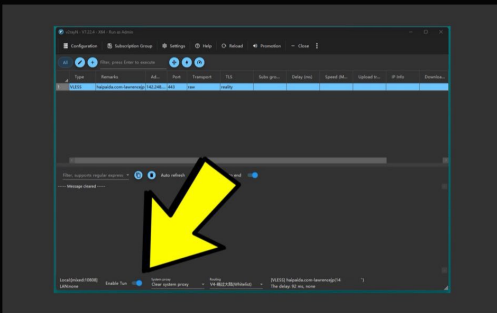
Port: **443**

Transport: **raw**

TLS: **reality**

This means the configuration has been imported successfully.

Step 11: Enable Tun mode

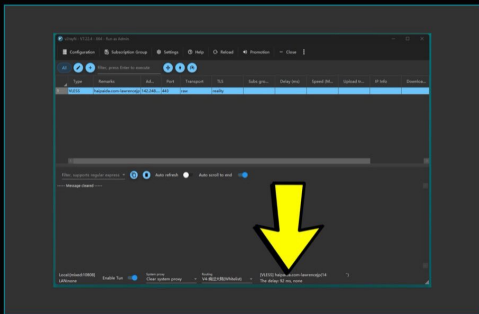


At the bottom-left of **v2rayN**, find:
Enable Tun
Turn it on.



After Tun mode is enabled, **v2rayN** will route the **Windows** system network through the configured connection.

Step 12: Check the connection delay



After the configuration is imported and Tun mode is enabled, the bottom area may show something like:

The delay: 92 ms

If a normal delay value is shown, the connection is usually working.

Completed

The Windows client installation and setup is now complete.

Next time, you only need to:

Open **v2rayN**

→ Make sure the configuration is still there

→ Turn on **Enable Tun**

keep v2rayN running

Haipaida

Configuration completed. Enjoy your experience!

For any questions, please contact our technical support team | Technical Document Version: V2.0